

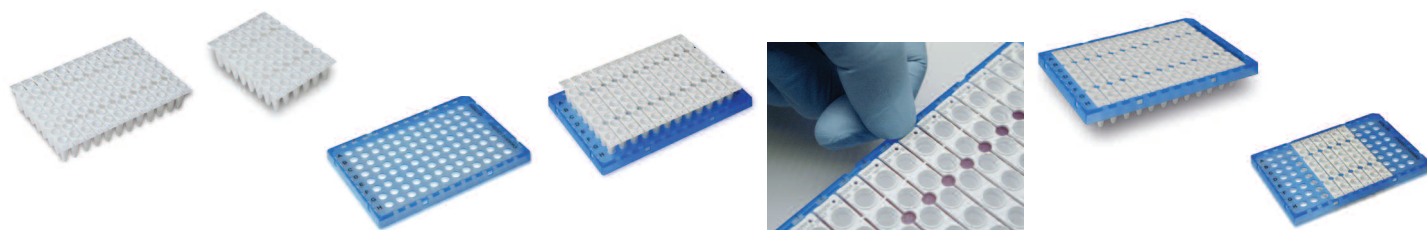
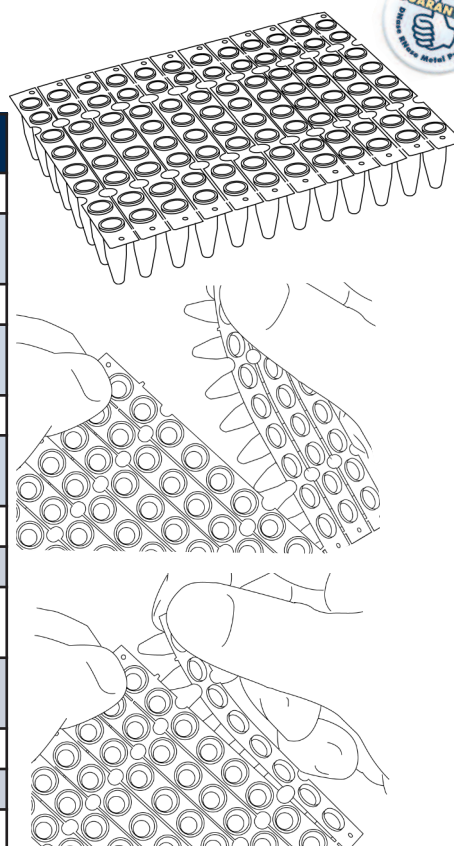
# The (q)PCR disposable Solution

## Flexible 12x8 Tear-Off Tube Strip Mat

- o Multiples of 8-wells format
- o For PCR and Real Time PCR applications
- o Fits all standard 0.2 ml PCR and qPCR tube-strip/plate Thermocyclers
- o Available in clear, frosted and white versions



FEATURES	ADVANTAGES	BENEFITS
Tear Off Format	Use of multiples of 8 wells	Economic usage
		Pipet in 96 well format, use in 8 well or multiple of 8 well format
	Removal of individual rows of a plate	Minimize cross contamination
Compatible with Shell Frame Grids	Combination makes specific subskirted plates	Enables specific qPCR cyclers fit
		Easy use in robotics
		Compatibe with ABI (q)PCR thermocyclers
Extra robust strips	Stable shape	No bending, wrapping or breaking
		Easy to position and handle
Closure with tear-off cap strip mat	Simultaneously closure of complete Tube Strip Mat	Easy and fast handling
	Possible to separate closed 8-Tube strips	Set-up in 96 well format and use in 8 strip format
Auto-orientation holes	correct positioning strips	Traceability of samples
Frosted writing areas	Easy sample marking	Traceability of samples
Laser Labelling Available	Unique sample indentification	Full traceability of samples



Promotion\* € 40 for 25 Mats (B58001)

\* valid from July 15 to October 1st, 2012.

### 96 x 0.2ml Tear-off 8-Tube Strip Mat Regular Profile

Order no	Description
B58001	96 x 0.2 ml Tear-off 8 Tube Strip Mat ,RP, LF, Natural
B58009	96 x 0.2 ml Tear-off 8 Tube Strip Mat ,RP, White
K58001	96 x 0.2 ml Tear-off 8 Tube Strip Mat ,RP, Clear, Natural

Package Size
Box of 25 plates / 300 connected strips
Box of 25 plates / 300 connected strips
Box of 25 plates / 300 connected strips

Price Euro
50 Action* 40
50
50 Action* 40

### Related Products

Order no	Description	Package Size	Price
B57651	Optical Tear-off 8-Cap Strip Mat	Natural, Box of 25 Mats (300 strips)	52,50
AB17503G	96 x 0.2ml Shell Frame Grid™	Blue, Bag of 24	25
B12345	One step (Dis)-Assembling/ Toolkit for Shell Frame Grids™	Box, complete Kit	125



**(q) PCR Cycler Compatibility List**  
**Tear-off 8-tube strip Mat, Regular Profile [B58001, B58009, K58001]**

**Most popular cyclers**

**Other Cyclers**

Applied Biosystems	310 <sup>2</sup>	96 x 0.2ml
Applied Biosystems	3100 <sup>2</sup>	96 x 0.2ml
Applied Biosystems	3130 <sup>2</sup>	96 x 0.2ml
Applied Biosystems	3700 <sup>2</sup>	96 x 0.2ml
Applied Biosystems	7300 <sup>1,3</sup> Real-Time PCR System	96 x 0.2ml
Applied Biosystems	7500 <sup>1,3</sup> Real-Time PCR System	96 x 0.2ml Standard
Applied Biosystems	7900 <sup>2</sup> HT Real-Time PCR System	96 x 0.2ml Standard
Applied Biosystems	ABI PRISM 7000 <sup>1,3</sup> SDS	96 x 0.2ml
Applied Biosystems	ABI PRISM 7700 <sup>1,3</sup> SDS	96 x 0.2ml
Applied Biosystems	GeneAmp PCR System 2400 <sup>1</sup>	24 x 0.2ml
Applied Biosystems	GeneAmp PCR System 2700 <sup>1,3</sup>	96 x 0.2ml
Applied Biosystems	GeneAmp PCR System 2720 <sup>1,3</sup>	96 x 0.2ml
Applied Biosystems	GeneAmp PCR System 5700 <sup>1,3</sup>	96 x 0.2ml
Applied Biosystems	GeneAmp PCR System 9600 <sup>1,3</sup>	96 x 0.2ml
Applied Biosystems	GeneAmp PCR System 9700 <sup>1,3</sup>	96 x 0.2ml
Applied Biosystems	GeneAmp PCR System 9700 <sup>1,3</sup> Dual	96 x 0.2ml
Applied Biosystems	QuantStudio <sup>1,3</sup> 12k Flex	96 x 0.2ml
Applied Biosystems	Veriti <sup>TM</sup> 96-Well Thermal Cycler <sup>1,3</sup>	96 x 0.2ml
Applied Biosystems	ViiA <sup>TM</sup> 7 Real-Time PCR System <sup>1,3</sup>	96 x 0.2ml
Bio-Rad Laboratories	C1000 <sup>1,3</sup>	48 x 0.2ml & 96 x 0.2ml
Bio-Rad Laboratories	C1000 <sup>1,3</sup> Touch	0.2 ml
Bio-Rad Laboratories	CFX96 <sup>1,3</sup> Real-Time PCR	96 x 0.2ml
Bio-Rad Laboratories	DNA Engine <sup>1</sup>	48-48 0.2 ml
Bio-Rad Laboratories	DNA Engine 96v <sup>1,3</sup>	96 x 0.2ml
Bio-Rad Laboratories	DNA Engine Chromo4 <sup>1,3</sup>	96 x 0.2ml
Bio-Rad Laboratories	DNA Engine Dyad <sup>1,3</sup>	0.2 ml
Bio-Rad Laboratories	DNA Engine Dyad Disciple <sup>1,3</sup>	0.2 ml
Bio-Rad Laboratories	DNA Engine Tetrad 1 <sup>1,3</sup>	0.2 ml
Bio-Rad Laboratories	DNA Engine Tetrad 2 <sup>1,3</sup>	0.2 ml
Bio-Rad Laboratories	GeneCycler <sup>1</sup>	24 x 0.2ml
Bio-Rad Laboratories	iCycler <sup>1,3</sup>	0.2 ml
Bio-Rad Laboratories	iQ Real-Time PCR <sup>1,3</sup>	96 x 0.2ml
Bio-Rad Laboratories	iQ5 Real-Time PCR <sup>1,3</sup>	96 x 0.2ml
Bio-Rad Laboratories	MiniOpticon <sup>1</sup>	48 x 0.2ml
Bio-Rad Laboratories	MJ Mini <sup>1</sup>	48 x 0.2ml
Bio-Rad Laboratories	MyCycler <sup>1,3</sup>	96 x 0.2ml
Bio-Rad Laboratories	MyiQ Real-Time PCR <sup>1,3</sup>	96 x 0.2ml
Bio-Rad Laboratories	PTC-100 <sup>1,3</sup>	96 x 0.2ml
Bio-Rad Laboratories	S1000 <sup>1,3</sup>	96 x 0.2ml
Bio-Rad Laboratories	T100 <sup>1,3</sup>	96 x 0.2ml
Eppendorf	Mastercycler <sup>1,3</sup>	96 x 0.2ml
Eppendorf	Mastercycler ep gradient <sup>1,3</sup>	96 x 0.2ml
Eppendorf	Mastercycler ep realplex <sup>1,3</sup>	96 x 0.2ml
Eppendorf	Mastercycler pro <sup>1,3</sup>	96 x 0.2ml
Eppendorf	Mastercycler pro S <sup>1,3</sup>	96 x 0.2ml
Eppendorf	Thermomixer comfort <sup>1,3</sup>	96 x 0.2ml
MJ Research Inc.	PTC-100 <sup>1,3</sup>	96 x 0.2ml
MJ Research Inc.	PTC-200 DNA Engine <sup>1,3</sup>	0.2ml
MJ Research Inc.	PTC-220 DNA Engine Dyad <sup>1,3</sup>	0.2 ml
MJ Research Inc.	PTC-221 DNA Engine Disciple <sup>1,3</sup>	0.2 ml
MJ Research Inc.	PTC-225 DNA Engine Tetrad <sup>1,3</sup>	0.2 ml
MJ Research Inc.	PTC-240 DNA Engine Tetrad 2 <sup>1,3</sup>	0.2 ml
Stratagene	Mx3000P <sup>TM</sup> <sup>1,3</sup>	96 x 0.2ml
Stratagene	Mx3005P <sup>TM</sup> <sup>1,3</sup>	96 x 0.2ml
Stratagene	Mx4000 <sup>TM</sup> <sup>1,3</sup>	96 x 0.2ml
Whatman Biometra	T1 Thermocycler <sup>1,3</sup>	96 x 0.2ml
Whatman Biometra	T1 Thermocycler Combi <sup>1,3</sup>	0.2 ml
Whatman Biometra	T3 Thermocycler <sup>1,3</sup>	0.2 ml
Whatman Biometra	T3 Thermocycler Combi <sup>1,3</sup>	0.2 ml
Whatman Biometra	T3000 Thermocycler Combi <sup>1,3</sup>	0.2 ml
Whatman Biometra	TGradient <sup>1,3</sup>	96 x 0.2ml
Whatman Biometra	TOptical <sup>1,3</sup>	96 x 0.2ml
Whatman Biometra	TPersonal <sup>1,3</sup>	48 x 0.2ml
Whatman Biometra	TPersonal Combi <sup>1,3</sup>	0.2 ml
Whatman Biometra	TProfessional <sup>1,3</sup>	96 x 0.2ml
Whatman Biometra	TProfessional Basic <sup>1,3</sup>	96 x 0.2ml
Whatman Biometra	TProfessional Basic Gradient <sup>1,3</sup>	96 x 0.2ml
Whatman Biometra	TProfessional TRIO <sup>1,3</sup>	0.2 ml
Whatman Biometra	TRobot <sup>1,3</sup>	96 x 0.2ml
Whatman Biometra	UNO II <sup>1,3</sup>	96 x 0.2ml
Whatman Biometra	UNO-thermoblock <sup>1,3</sup>	96 x 0.2ml

**Cycler Model<sup>1</sup>:** FITS CYCLER IN WHOLE OR IN PART(S)

**Cycler Model<sup>2</sup>:** FITS CYCLER ONLY IN WHOLE OR IN PART(S) WHEN COMBINED WITH AB17503G 96 x 0.2ml Shell Frame Grid

**Cycler Model<sup>3</sup>:** FITS CYCLER ALSO IN WHOLE OR IN PARTS WHEN COMBINED WITH AB17503G 96 x 0.2ml Shell Frame Grid

Trademarks © (registered) Trademarks <Owner>,  
 ABI Prism 5700, 700, 7000, 7700 and 7900 <the Perkin Elmer Corp.>,  
 Abbot, M2000rt <Abbot Corp.>, Analytik-Jena, FlexCycler <Analytik-Jena>, CEQ <Beckman>, Corbett Research, Palm-Cycler<Corbett Research>, Dupont, BAQ Q7 <Dupont Corp.>, Eppendorf, MasterCycler <Eppendorf AG>, Lightcycler 480 systems (Roche)>, Mx3000, Mx3000P, Mx3005P, Mx4000 <Stratagene>, Opticon, iCycler iQ, iCycler, iQ5, CFX <Bio-Rad laboratories, Inc.>, Quantica <Techne Ltd and techne Inc.>, StepOne, Veriti, QuantStudio <Applied Biosystems>, Thermo Hybaid <Thermo Corp.>Shell Frame Grids, BIOplastics (logo), EU, BIOplastics <BIOplastics BV>

Abbott	m2000rt <sup>1,3</sup>	96 x 0.2ml
AcuGen Systems	AG-9600 thermal station <sup>1,3</sup>	96 x 0.2ml
Agilent	SureCycler 8800 thermal cycler <sup>1,3</sup>	96 x 0.2ml
Analytik-Jena	Alpha SC <sup>1,3</sup>	48 & 96 x 0.2ml
Analytik-Jena	FlexCycler <sup>1,3</sup>	
Apollo	ATC201 <sup>1</sup>	96-48 96 x 0.2ml
Apollo	ATC701 <sup>1,3</sup>	96 x 0.2ml
Apollo	ATC801 <sup>1,3</sup>	96 x 0.2ml
Astec	PC-320 <sup>1</sup>	32 x 0.2ml
Barnstead Thermolyne	Amplitrion I & II <sup>1,3</sup>	0.2 ml
Beckman	CEQ 8000 & CEQ 8800 <sup>1,3</sup>	96 x 0.2ml
Bioer	GenePro B-96G <sup>1,3</sup> , B-48D <sup>1</sup>	0.2 ml
Bioer	GeneQ TC-24/H(b) <sup>1</sup>	24 x 0.2ml
Bioer	Life Express TC-96/T/H(a) <sup>1,3</sup>	96 x 0.2ml
Bioer	LifePro TC-96/G/H(b)a <sup>1,3</sup>	96 x 0.2ml
Bioer	Line-Gene 9600 <sup>1,3</sup>	96 x 0.2ml
Bioer	Line-Gene K FQD-48A <sup>1</sup>	48 x 0.2ml
Bioer	Little Genius TC-24/H <sup>1</sup>	24 x 0.2ml
Bioer	XPcycler all models <sup>1,3</sup>	0.2 ml
Bioneer	MyGene <sup>1</sup>	0.2 ml
Boeco	TC-PRO 48D <sup>1</sup>	48 x 0.2ml
Boeco	TC-PRO 96G <sup>1,3</sup>	96 x 0.2ml
Corbett Research	FTS 96 & FTS A 96 <sup>1,3</sup>	96 x 0.2ml
Corbett Research	Palm-Cycler <sup>1,3</sup>	96 x 0.2ml
Corbett Research	PC 96 <sup>1,3</sup>	96 x 0.2ml
DNA Technology	TC 9443 <sup>1</sup>	32 x 0.2ml
DuPont Qualicon	BAX System Q7 <sup>1,3</sup>	96 x 0.2ml
eNZYME	GenePro Thermal Cycler <sup>1,3</sup>	0.2 ml
eNZYME	GeneQ Personal Thermal Cycler <sup>1,3</sup>	0.2 ml
eNZYME	LifeExpress <sup>1,3</sup>	96 x 0.2ml
eNZYME	MyGene MG-96 Gradient Thermal Cycler <sup>1,3</sup>	
Ericom	Deltacycler I & II <sup>1,3</sup>	96 x 0.2ml
Esco	Swift <sup>TM</sup> Maxi <sup>1,3</sup>	0.2ml
Esco	Swift <sup>TM</sup> MaxPro <sup>1,3</sup>	0.2ml
Esco	Swift <sup>TM</sup> MiniPro <sup>1</sup>	24 x 0.2ml
Esco	Swift <sup>TM</sup> Spectrum 48 Real Time <sup>1</sup>	48 x 0.2ml
Esco	Swift <sup>TM</sup> Spectrum 96 Real Time <sup>1,3</sup>	96 x 0.2ml
EuroClone	One Advanced <sup>1,3</sup>	96 x 0.2ml
EuroClone	One Gradient <sup>1,3</sup>	96 x 0.2ml
EuroClone	peqSTAR 96 HPL <sup>1,3</sup>	96 x 0.2ml
EuroClone	peqSTAR 96 ML <sup>1,3</sup>	96 x 0.2ml
EuroClone	peqSTAR 96 Universal <sup>1,3</sup>	96 x 0.2ml
Finnzymes Instruments	Arktik <sup>1,3</sup>	0.2ml
Gene Technologies Ltd.	G-Storm GS1 <sup>1,3</sup>	0.2ml
Gene Technologies Ltd.	G-Storm GS2 <sup>1,3</sup>	0.2ml
Gene Technologies Ltd.	G-Storm GS4 <sup>1,3</sup>	0.2ml
Gene Technologies Ltd.	G-Storm GSX <sup>1,3</sup>	0.2 ml
Helena Biosciences	Phoenix Thermal Cycler <sup>1,3</sup>	96 x 0.2ml
INHECO	Heater Oily 96 <sup>1,3</sup>	96 x 0.2ml
Kyratec	SuperCycler <sup>1,3</sup>	96 x 0.2ml
Lab-Line Instruments	Programmable Thermal Block <sup>1,3</sup>	0.2ml
Labnet	MultiGene 96 & Gradient <sup>1,3</sup>	96 x 0.2ml
Labnet	MultiGene Mini Personal Thermal Cycler <sup>1</sup>	24 x 0.2ml
Landgraf	Varius M & Varius V 80 <sup>1,3</sup>	0.2 ml
LongGene Scientific Instruments Co.,Ltd.	Gradient PCR <sup>1,3</sup>	0.2 ml
LongGene Scientific Instruments Co.,Ltd.	L Series <sup>1,3</sup>	0.2 ml
LongGene Scientific Instruments Co.,Ltd.	Multi-Purpose PCR <sup>1,3</sup>	0.2 ml
LongGene Scientific Instruments Co.,Ltd.	MyGeneTM PCR <sup>1,3</sup>	0.2 ml
MWG-Biotech	Primus 96 <sup>1,3</sup>	0.2 ml
MWG-Biotech	Primus Dualblock PCR-System <sup>1,3</sup>	0.2 ml
MWG-Biotech	Primus Multiblock PCR-System <sup>1,3</sup>	0.2 ml
MWG-Biotech	Primus PCR-System <sup>1,3</sup>	0.2 ml
Oncor	Crocodile <sup>1,3</sup>	96 x 0.2ml
Peqlab	peqSTAR <sup>1,3</sup>	0.2 ml
Peqlab	Primus 96 <sup>1,3</sup>	0.2 ml
ProGen	Thermal Cycler <sup>1,3</sup>	96 x 0.2ml
PTI	FluoDia T70 <sup>1,3</sup>	96-wells
Scinics	EZ-Cycler MP-96	96 x 0.2ml
SensoQuest	Labcycler <sup>1,3</sup>	0.2 ml
Roche	Nano <sup>1</sup>	0.2 ml
Stratagene	Mx3000P <sup>TM</sup> <sup>1,3</sup>	96 x 0.2ml
Stratagene	Mx3005P <sup>TM</sup> <sup>1,3</sup>	96 x 0.2ml
Stratagene	Mx4000 <sup>TM</sup> <sup>1,3</sup>	96 x 0.2ml
Techne	Flexigene <sup>1,3</sup>	96 x 0.2ml
Techne	Gene-E <sup>1,3</sup>	96 x 0.2ml
Techne	Genius <sup>1,3</sup>	96 x 0.2ml
Techne	TC-3 all 0.2 ml models <sup>1</sup>	0.2 ml
Techne	Touchgene Gradient <sup>1,3</sup>	96 x 0.2ml
Thermo Hybaid	All models <sup>1,3</sup>	0.2 ml
ThermoFisher Scientific	Arktik Thermal Cycler <sup>1</sup>	48 x 0.2ml
ThermoFisher Scientific	Arktik Thermal Cycler <sup>1,3</sup>	96 x 0.2ml
Transgenomics	Wave MD System 4000 <sup>1,3</sup>	96 x 0.2ml
VWR	DuoCycler <sup>1,3</sup>	96 x 0.2ml
VWR	DuoCycler fast <sup>1,3</sup>	96 x 0.2ml
VWR	QuattroCycler <sup>1,3</sup>	96 x 0.2ml
VWR	QuattroCycler fast <sup>1,3</sup>	96 x 0.2ml
VWR	UnoCycler <sup>1,3</sup>	96 x 0.2ml
VWR	UnoCycler fast <sup>1,3</sup>	96 x 0.2ml
Xian Tianlong Science & Technology	all models <sup>1</sup>	0.2ml
Xian Tianlong Science & Technology	TL988 Real-time PCR <sup>1</sup>	36-48 48 x 0.2

This is a limited section of the BIOplastics's  
**Assembly and DisAssembly Guide for 96 Tube-Strip Mats in Shell Frame Grids**

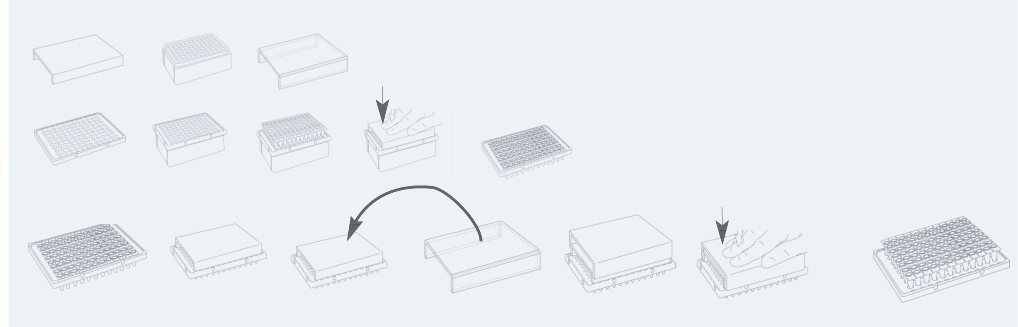
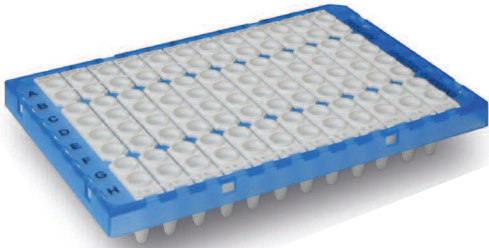
(Full version downloadable at [www.bioplastics.com](http://www.bioplastics.com))

Applicable for All types of BIOplastics Shell Frame Grids:

Applied Biosystems Regular cyclers (0.2 ml): Shell Frame Grid **AB17503G (blue)**

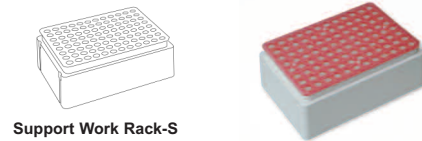
Notice that specific cycler grids are required for specific cycler brands and models. However specific cycler grids assemblies also fit most other brands of cyclers. (see website [www.bioplastics.com](http://www.bioplastics.com)) AB17503G fits all ABI regular(non fast) cyclers and almost any other cycler brand except LightCycler® 480 system

**Also available One step (Dis)-Assembly / Toolkit order #B12345**



**Manual Assembly 8 Tube-strip-(mats) to Shell Frame Grids (SFG)**

For Manual Assembly the use of a Support Work Rack-S (B69409) with EU Tube Support Grid (B69302) is recommended but not required. The parts are also included in the Sample Shell Frame Grid. (#SFG123) and the One Step Tool Kit #B12345.



**Manual Assembly using Support Work Rack-S**

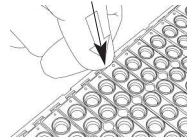


Shell Frame Grid (SFG)

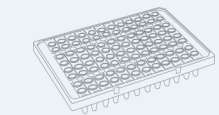
1. Position SFG over Support Work Rack-S

2. Place 8-Tube-Strip Mat in SFG

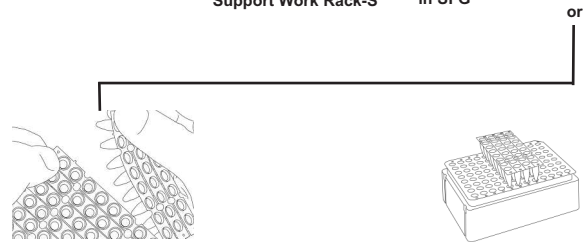
Apply soft down pressure to "click"



3. Press with your thumb(s) at the terminal side(s) of each strip allowing them to "click" into the SFG

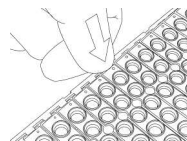


Your assembly is ready to use

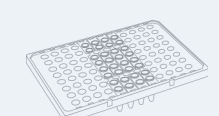


2. Place 8-Tube-Strip Mat section in SFG

Apply soft down pressure to "click"

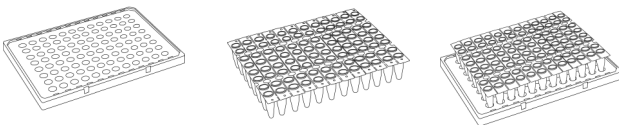


3. Press with your thumb(s) at the terminal side(s) of each strip allowing them to "click" into the SFG



Your assembly is ready to use

**Manual Assembly**



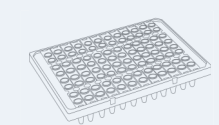
1. Position SFG on a flat surface (table)

2. Place 8-Tube-Strip Mat in SFG (flat surface/table)



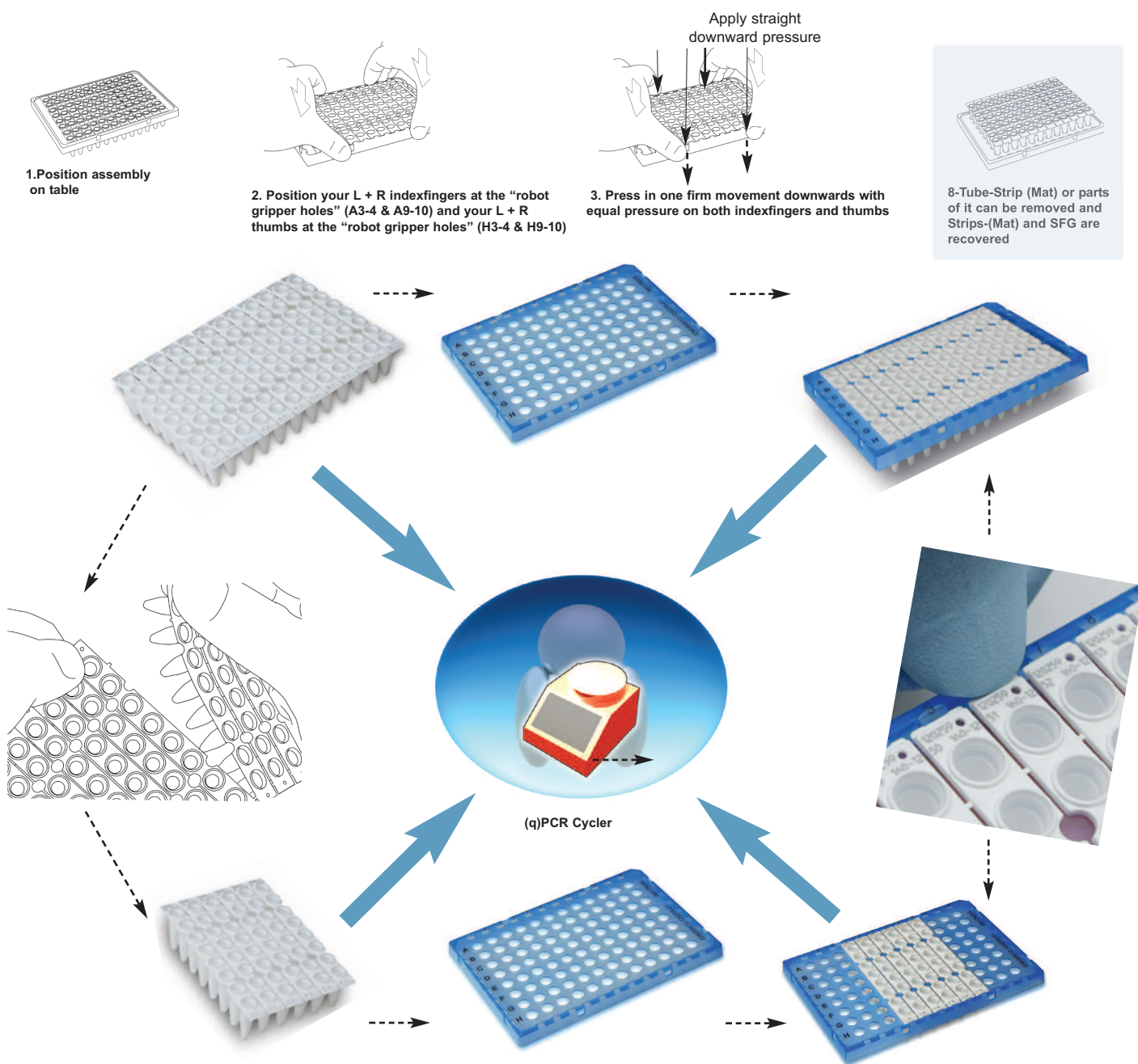
Apply soft down pressure to "click"

3. Lift Shell Frame Grid and point push thumbs at terminal side of the strip until strip "clicks" into the SFG while counter pressure at the bottom of the skirt is applied by your indexfingers



Your assembly is ready to use

## Manual Disassembly



Products are designed and manufactured in the Netherlands. SAMPLES on request and/or purchase with money back guarantee\* (\* if proven to be not working) Contact your local representative. All rights reserved. 1296KC@BIOplastics BV

### Headquarters:

(R&D and Manufacturing)  
 BIOplastics BV  
 Rötischerweg 61  
 Entrance D  
 6374 XW Landgraaf  
 The Netherlands

Phone: +31 (0)45 533 87 50  
 Fax: +31 (0)45 533 87 96  
 Website: [www.bioplastics.com](http://www.bioplastics.com)  
 E-mail: [info@bioplastics.com](mailto:info@bioplastics.com)

### Subsidiary:

BPCTi Inc.  
 2933 South Miami Blvd.  
 Suite 121  
 Durham, NC 27703, USA

Phone: 919 806 8811  
 Fax: 919 806 2014  
 Website: [www.bpcti.com](http://www.bpcti.com)  
 E-mail: [info@bpcti.com](mailto:info@bpcti.com)

### Your local distributor:

