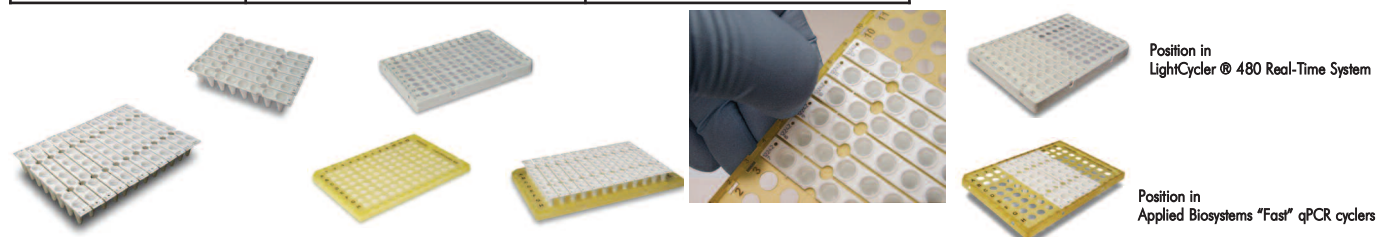
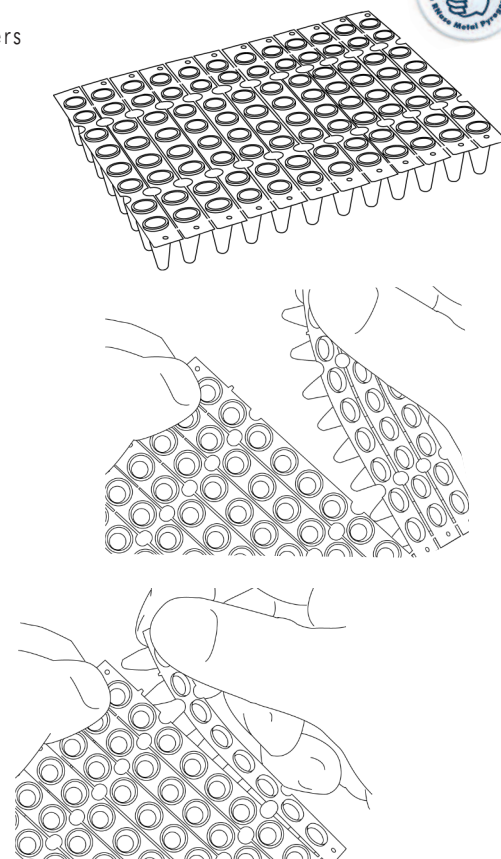


# Fast Cyclers (q)PCR disposable Solution Flexible LP 12x8 Tear-Off Tube Strip Mat

- o Multiples of 8-wells format
- o For PCR and Real Time PCR applications
- o Fits all Fast 0.2 and 0.1 ml PCR and qPCR tube-strip/plate Thermocyclers
- o Available in clear, frosted and white versions



FEATURES	ADVANTAGES	BENEFITS
Tear Off Format	Use of multiples of 8 wells	Economic usage
		Pipet in 96 well format, use in 8 well or multiple of 8 well format
	Removal of individual rows of a plate	Minimize cross contamination
Compatible with Shell Frame Grids	Combination makes specific subskirted plates	Enables specific qPCR cyclers fit
		Easy use in robotics
		Compatibe with ABI (q)PCR thermocyclers
Extra robust strips	Stable shape	No bending, wrapping or breaking
		Easy to position and handle
Closure with tear-off cap strip mat	Simultaneously closure of complete Tube Strip Mat	Easy and fast handling
	Possible to separate closed 8-Tube strips	Set-up in 96 well format and use in 8 strip format
Auto-orientation holes	correct positioning strips	Traceability of samples
Frosted writing areas	Easy sample marking	Traceability of samples
Laser Labelling Available	Unique sample identification	Full traceability of samples



Position in LightCycler® 480 Real-Time System

Position in Applied Biosystems "Fast" qPCR cyclers

Promotion\* € 40 for 25 Mats (K59001)

\* valid from September 10 to December 16, 2012.

### 96 x 0.2ml Tear-off 8-Tube Strip Mat Low Profile

Order#	Description
B59001	96 x 0.2 ml Tear-off 8 Tube Strip Mat, LP, LF, Natural
B59009	96 x 0.2 ml Tear-off 8 Tube Strip Mat, LP, White
K59001	96 x 0.2 ml Tear-off 8 Tube Strip Mat, LP, Clear, Natural

Package Size
Box of 25 plates / 300 connected strips
Box of 25 plates / 300 connected strips
Box of 25 plates / 300 connected strips

Price
€ 50
€ 50
€ 50* 40

### Related Products

Order#	Description
B17489G	Shell Frame Grid 96 x 0.1 LP fits LightCycler® 480 systems and others
AB19805G	Shell Frame Grid 96 x 0.1 LP fits any ABI Fast Cyclers
B57651	Optical Tear-off 8-Cap Strip Mat
B12345	One step (Dis)-Assembling/ Toolkit for Shell Frame Grids™

Package Size
White, Bag of 24
Yellow, Box of 24
Natural, Box of 25 Mats (300 strips)
Box, complete Kit

Price
€ 25
€ 25
€ 52.50
€ 125



**(q) PCR Cycler Compatibility List**  
**0.2 ml Low Profile also called 0.1 ml Tear-off 8-tube strip Mat, Low Profile [B59001, B59009, K59001]**  
**sole fit and/or combined with Shell Frame Grids**

**Most popular cyclers**

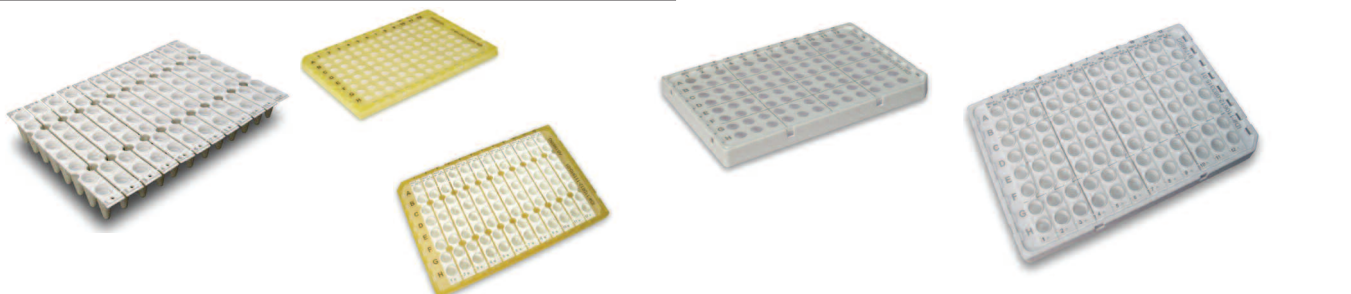
**Other Cyclers**

Applied Biosystems	7500 Fast Real-Time PCR System <sup>14B</sup>	96 x 0.2ml Fast
Applied Biosystems	7900 HT Fast Real-Time PCR System <sup>14C</sup>	96 x 0.2ml Fast
Applied Biosystems	9800 Fast Thermal Cycler <sup>4B</sup>	96 x 0.2ml
Applied Biosystems	GeneAmp PCR System 9600 <sup>4</sup>	96 x 0.2ml
Applied Biosystems	StepOnePlus™ Real-Time PCR System <sup>14B</sup>	96 x 0.1ml
Applied Biosystems	StepOne™ Real-Time PCR System <sup>14</sup>	48 x 0.1ml
Applied Biosystems	Veriti™ 96-Well Fast Thermal Cycler <sup>14B</sup>	96 x 0.1ml
Applied Biosystems	ViiA™ 7 Real-Time PCR System <sup>14B</sup>	96 x 0.1ml
Bio-Rad Laboratories	C1000 <sup>4A</sup>	48 x 0.2ml & 96 x 0.2
Bio-Rad Laboratories	C1000 Touch <sup>4A</sup>	48 x 0.2ml & 96 x 0.2
Bio-Rad Laboratories	CFX96 Real-Time PCR Detection Syst. <sup>134A</sup>	96 x 0.2ml
Bio-Rad Laboratories	DNA Engine <sup>4A</sup>	48 x 0.2ml & 96 x 0.2
Bio-Rad Laboratories	DNA Engine Chromo <sup>134A</sup>	96 x 0.2ml
Bio-Rad Laboratories	DNA Engine Dyad <sup>4A</sup>	48 x 0.2ml & 96 x 0.2
Bio-Rad Laboratories	DNA Engine Dyad Disciple <sup>4A</sup>	48 x 0.2ml & 96 x 0.2
Bio-Rad Laboratories	DNA Engine Tetrad 2 <sup>4A</sup>	48 x 0.2ml & 96 x 0.2
Bio-Rad Laboratories	iCycler <sup>4</sup>	48 x 0.2ml
Bio-Rad Laboratories	MiniOpticon <sup>134</sup>	48-12 48 x 0.2ml
Bio-Rad Laboratories	MJ Mini <sup>4</sup>	48-12 48 x 0.2ml
Bio-Rad Laboratories	Opticon 2 <sup>134A</sup>	96 x 0.2ml
Bio-Rad Laboratories	PTC-100 <sup>4A</sup>	96 x 0.2ml
Bio-Rad Laboratories	S1000 <sup>4A</sup>	48 x 0.2ml & 96 x 0.2
Bio-Rad Laboratories	T100 <sup>4A</sup>	96 x 0.2ml
Eppendorf	Mastercycler <sup>4A</sup>	96 x 0.2ml
Eppendorf	Mastercycler ep gradient + Silver <sup>4A</sup>	96 x 0.2ml
Eppendorf	Mastercycler ep realplex + Silver <sup>134A</sup>	96 x 0.2ml
Eppendorf	Mastercycler pro + pro S <sup>4A</sup>	96 x 0.2ml
Eppendorf	Mastercycler pro S <sup>4A</sup>	96 x 0.2ml
Eppendorf	Thermomixer comfort <sup>4A</sup>	96 x 0.2ml
MJ Research Inc.	PTC-100 <sup>4A</sup>	96 x 0.2ml
MJ Research Inc.	PTC-200 DNA Engine <sup>4A</sup>	48 x 0.2ml & 96 x 0.2
MJ Research Inc.	PTC-220 DNA Engine Dyad <sup>4A</sup>	48 x 0.2ml & 96 x 0.2
MJ Research Inc.	PTC-225 DNA Engine Tetrad <sup>4A</sup>	48 x 0.2ml & 96 x 0.2
Roche	COBAS Taqman 48 Analyzer <sup>4A</sup>	24 x 0.2ml
Roche	LightCycler @ 480 Real-Time System <sup>134D</sup>	96 x 0.2ml
Roche	LightCycler @ Nano <sup>24</sup>	32 x 0.2 ml
Biometra	T1 Thermocycler + Combi <sup>4A</sup>	96 x 0.2ml
Biometra	T3 Thermocycler + Combi <sup>4</sup>	48 x 0.2ml
Biometra	T3000 Thermocycler <sup>4</sup>	48 x 0.2ml
Biometra	TGradient <sup>4A</sup>	96x 0.2ml
Biometra	TOptical <sup>134A</sup>	96 x 0.2ml
Biometra	TPersonal <sup>4</sup>	48 x 0.2ml
Biometra	TProfessional All Types <sup>4A</sup>	96 x 0.2ml
Biometra	TProfessional TRIO <sup>4</sup>	48 x 0.2ml
Biometra	TRobot <sup>4A</sup>	96 x 0.2ml
Biometra	UNO II <sup>4A</sup>	96 x 0.2ml
Biometra	UNO-thermblock <sup>4A</sup>	96 x 0.2ml

Analytik-Jena	Alpha SC <sup>4A</sup>	48 x 0.2ml & 96 x 0.2
Analytik-Jena	FlexCycler <sup>4A</sup>	48 x 0.2ml & 96 x 0.2
Analytik-Jena	qTower <sup>134A</sup>	96 x 20ul
Apollo	All Models <sup>4A</sup>	48 x 0.2ml & 96 x 0.2
Astec	PC-320 <sup>4</sup>	32 x 0.2ml
Barnstead Thermolyne	Amplitrion I + II <sup>4A</sup>	96 x 0.2ml
Bioer	GenePro <sup>4A</sup>	48 x 0.2ml & 96 x 0.2
Bioer	GeneQ TC-24/H(b) <sup>4</sup>	24 x 0.2ml
Bioer	Life Express TC <sup>4A</sup>	0.2 ml
Bioer	LifePro TC-96/G/H(b)A <sup>4A</sup>	96 x 0.2ml
Bioer	Line-Gene 9600 <sup>4A</sup>	96 x 0.2ml
Bioer	Line-Gene K FQD-48A <sup>4</sup>	48 x 0.2ml
Bioer	XPcycler TC <sup>4A</sup>	48 x 0.2ml & 96 x 0.2
Bioneer	Excicycler 96 <sup>4A</sup>	96 x 0.2ml
Bioneer	MyGenie 32 Thermal Block <sup>4</sup>	32 x 0.2ml
Bioneer	MyGenie 96 Gradient Thermal Block <sup>4A</sup>	96 x 0.2ml
Boeco	TC-PRO <sup>4A</sup>	48 x 0.2ml & 96 x 0.2
eENZYME	GenePro Thermal Cycler <sup>4A</sup>	48 x 0.2ml & 96 x 0.2
eENZYME	LifeExpress B <sup>4A</sup>	48 x 0.2ml & 96 x 0.2
eENZYME	MyGene MG-96 <sup>4A</sup>	48 x 0.2ml & 96 x 0.2
Ericom	Deltacycler I+II <sup>4</sup>	96 x 0.2ml
Esco	Swift™ Maxi+Pro <sup>4A</sup>	48 x 0.2ml & 96 x 0.2
Esco	Swift™ MiniPro <sup>4</sup>	24 x 0.2ml
EuroClone	All Models <sup>4A</sup>	48 x 0.2ml & 96 x 0.2
Finnzymes Instruments	Piko™ 24-well <sup>4</sup>	24-wells
Finnzymes Instruments	Arktik <sup>4A</sup>	48 x 0.2ml & 96 x 0.2
Gene Technologies Ltd.	G-Storm GS1,2, GSX <sup>4A</sup>	48 x 0.2ml & 96 x 0.2
Helena Biosciences	Phoenix Thermal Cycler <sup>4A</sup>	96 x 0.2ml
INHECO	Heater Oilly 96 <sup>4A</sup>	96 x 0.2ml
Kyratec	SuperCycler <sup>4</sup>	96 x 0.2ml
Lab-Line Instruments	Programmable Thermal Block <sup>4A</sup>	48 x 0.2ml & 96 x 0.2
Lab-Line Instruments	Programmable Thermal Block <sup>4A</sup>	96 x 0.2ml
Labnet	MultiGene <sup>4A</sup>	96 x 0.2ml & 32x 0.2
Landgraf	Varius M <sup>4A</sup>	96 x 0.2ml
LongGene Scientific	Gradient PCR <sup>4A</sup>	48 x 0.2ml & 96 x 0.2
LongGene Scientific	L Series <sup>4A</sup>	48 x 0.2ml & 96 x 0.2
LongGene Scientific	Multi-Purpose PCR <sup>4A</sup>	96 x 0.2ml
LongGene Scientific	MyGeneTM PCR <sup>4A</sup>	48 x 0.2ml & 96 x 0.2
MWG-Biotech	Primus All models <sup>4A</sup>	96 x 0.2ml
MWG-Biotech	Primus 96 Plus <sup>4A</sup>	96 x 0.2ml
Peqlab	peqSTAR All Models <sup>4A</sup>	48 x 0.2ml & 96 x 0.2
Peqlab	Primus 96 all Models <sup>4</sup>	96 x 0.2ml
Scinvis	EZ-Cycler MP-96 <sup>4A</sup>	96 x 0.2ml
SensoQuest	Labcycler <sup>4A</sup>	48 x 0.2ml & 96 x 0.2
Techné	Flexigene <sup>4A</sup>	96 x 0.2ml
Techné	Gene-E <sup>4A</sup>	96 x 0.2ml
Techné	Genius <sup>4A</sup>	96 x 0.2ml
Techné	TC-All Models <sup>4A</sup>	48 x 0.2ml & 96 x 0.2
Techné	Touchgene Gradient <sup>4A</sup>	96 x 0.2ml
Thermo Hybaid	All Models <sup>4A</sup>	48 x 0.2ml & 96 x 0.2
ThermoFisher Scientific	Arktik Thermal Cycler <sup>4</sup>	48 x 0.2ml
ThermoFisher Scientific	Arktik Thermal Cycler <sup>4A</sup>	96 x 0.2ml
VWR	DuoCycler <sup>4A</sup>	96 x 0.2ml
VWR	DuoCycler fast <sup>4A</sup>	96 x 0.2ml
VWR	QuattroCycler <sup>4A</sup>	96 x 0.2ml
VWR	QuattroCycler fast <sup>4A</sup>	96 x 0.2ml
VWR	UnoCycler <sup>4A</sup>	96 x 0.2ml
VWR	UnoCycler fast <sup>4A</sup>	96 x 0.2ml

- 1 Cycler Model1: FROSTED PRODUCT IS RECOMMENDED
- 2 Cycler Model2: CLEAR, NON FROSTED, PRODUCT IS RECOMMENDED
- 3 Cycler Model3: WHITE PRODUCT IS RECOMMENDED
- 4 Cycler Model4: FITS CYCLER IN WHOLE OR IN PART(S)
- A Cycler ModelA: FITS CYCLER IN WHOLE OR IN PART(S) ALSO WHEN COMBINED ANY SHELL FRAME GRID (AB17503G, AB19805G, B17489G and B69304)
- B Cycler ModelB: FITS CYCLER IN WHOLE OR IN PART(S) ALSO WHEN COMBINED WITH AB19805G 96 x 0.2ml Shell Frame Grid
- C Cycler ModelC: FITS CYCLER ONLY WHEN COMBINED WITH AB19805G 96 x 0.2ml Shell Frame Grid
- D Cycler ModelD: FITS CYCLER ONLY WHEN COMBINED B17489G 96 x 0.2ml Shell Frame Grid

Trademarks © (registered) Trademarks <Owner>,  
 ABI Prism 5700, 700, 7000, 7700 and 7900 <the Perkin Elmer Corp.>,  
 Analytik-Jena, FlexCycler <Analytik-Jena> , Eppendorf, MasterCycler <Eppendorf AG> ,  
 Lightcycler 480 systems <Roche> , Opticon, iCycler, iQ5, CFX <Bio-Rad Laboratories, Inc.> , Quantica <Techné Ltd and Techné Inc.> , StepOne, Veriti, QuantStudio  
 <Applied Biosystems or it's subsidiaries> , Thermo Hybaid <Thermo Corp.> Shell Frame  
 Grids, BIOplastics (logo), EU, BIOplastics <BIOplastics BV>



This is a limited section of the BIOplastics's  
**Assembly and DisAssembly Guide for 96 Tube-Strip Mats in Shell  
 Frame Grids**

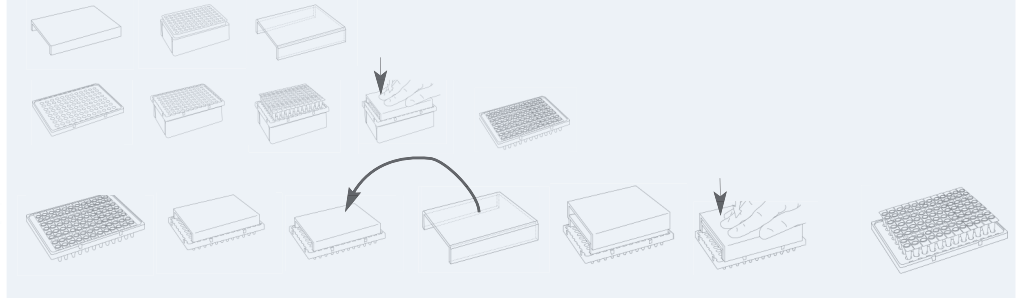
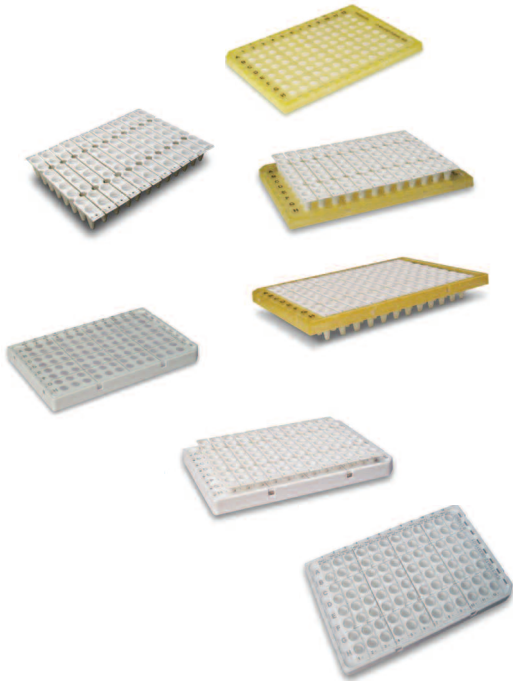
(Full version downloadable at [www.bioplastics.com](http://www.bioplastics.com))

Applicable for All types of BIOplastics Shell Frame Grids:

**B17489G** Shell Frame Grid 96 x 0.1 LP fits LightCycler® 480 systems and others, White  
**AB19805G** Shell Frame Grid 96 x 0.1 LP fits any ABI Fast Cyclers, Yellow

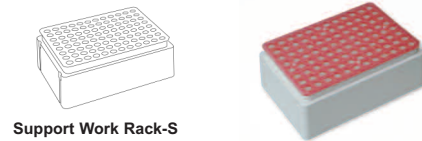
Notice that specific cyler grids are required for specific cyler brands and models.  
 However specific cyler grids assemblies also fit most other brands of cyclers. (see website [www.bioplastics.com](http://www.bioplastics.com))

**Also available One step (Dis)-Assembly / Toolkit order #B12345)**

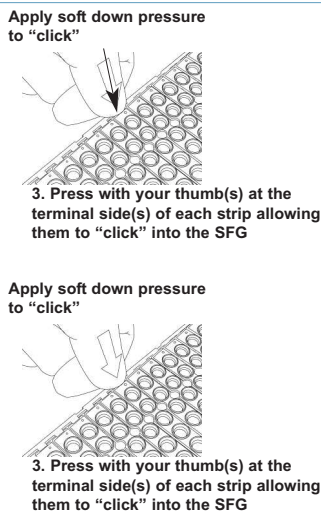
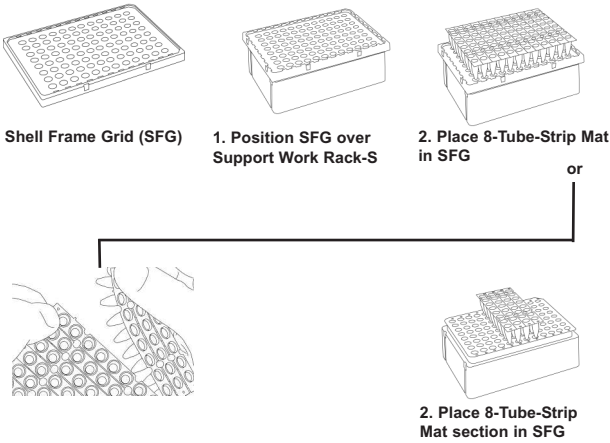


**Manual Assembly 8 Tube-strip-(mats) to Shell Frame Grids (SFG)**

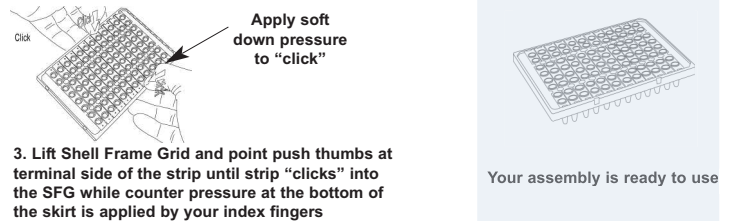
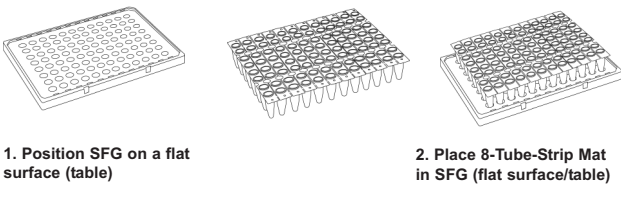
For Manual Assembly the use of a Support Work Rack-S (B69409) with EU Tube Support Grid (B69302) is recommended but not required. The parts are also included in the Sample Shell Frame Grid. (#SFG123) and the One Step Tool Kit #B12345.



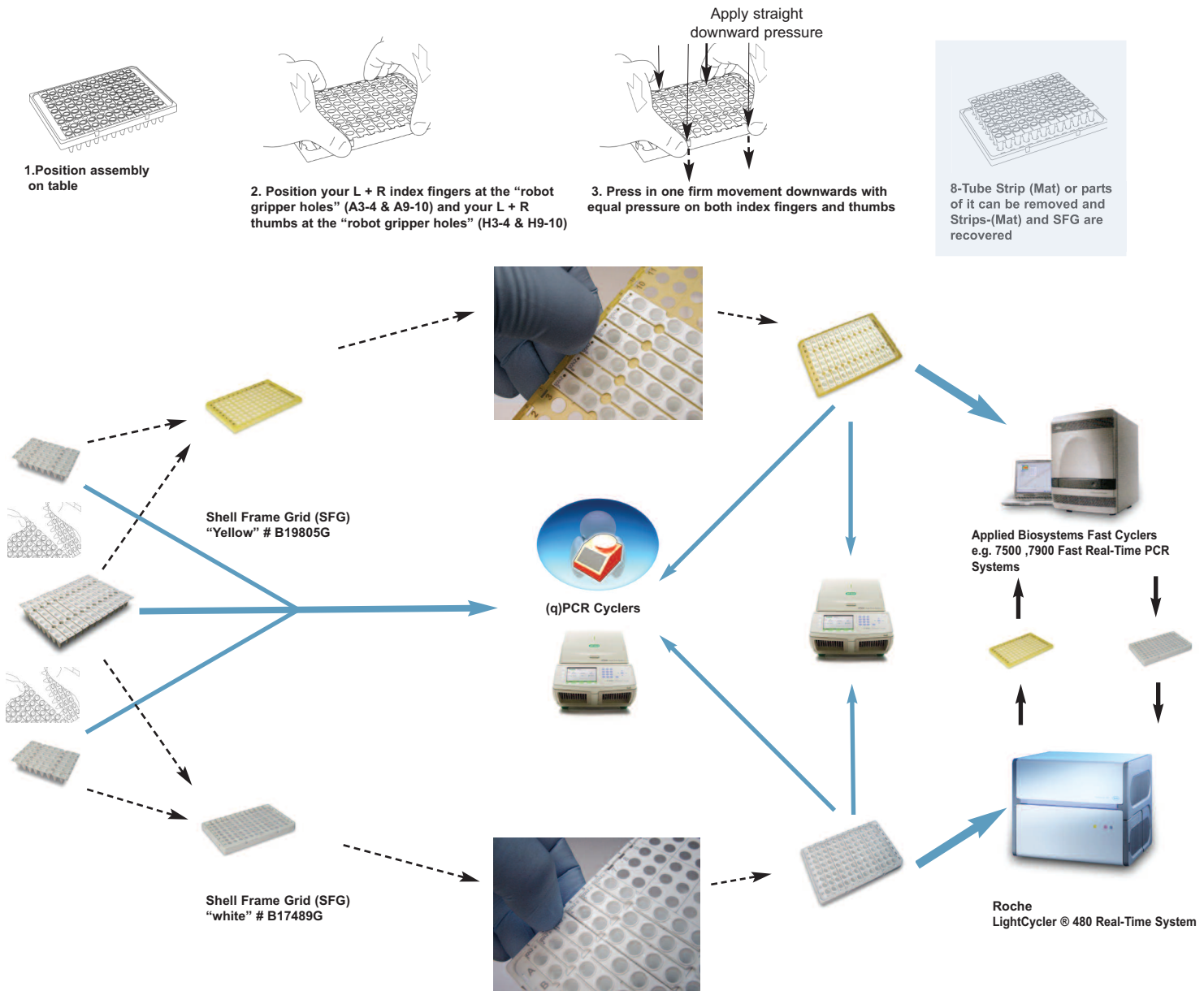
**Manual Assembly using Support Work Rack-S**



**Manual Assembly**



## Manual Disassembly



Products are designed and manufactured in the Netherlands. SAMPLES on request and/or purchase with money back guarantee\* (\* if proven to be not working) Contact your local representative. All rights reserved. 18KC3@BIOplastics BV

### Headquarters:

(R&D and Manufacturing)  
 BIOplastics BV  
 Rötischerweg 61  
 Entrance D  
 6374 XW Landgraaf  
 The Netherlands

Phone: +31 (0)45 533 87 50  
 Fax: +31 (0)45 533 87 96  
 Website: [www.bioplastics.com](http://www.bioplastics.com)  
 E-mail: [info@bioplastics.com](mailto:info@bioplastics.com)

### Subsidiary:

BPCTi Inc.  
 2933 South Miami Blvd.  
 Suite 121  
 Durham, NC 27703, USA

Phone: 919 806 8811  
 Fax: 919 806 2014  
 Website: [www.bpcti.com](http://www.bpcti.com)  
 E-mail: [info@bpcti.com](mailto:info@bpcti.com)

### Your local distributor:

